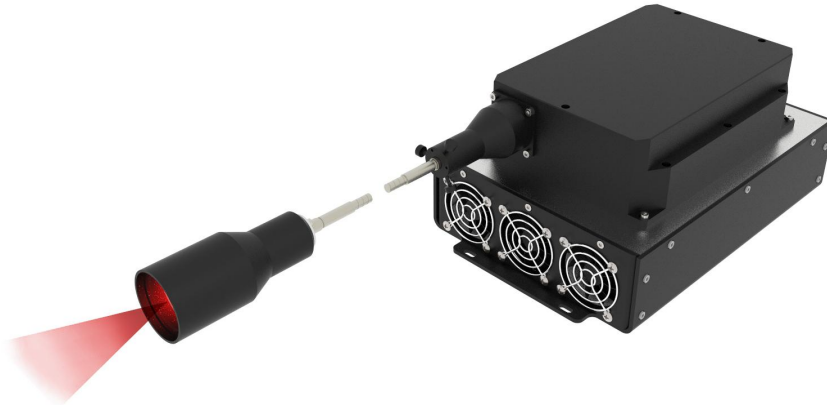


## ***MDL-SD/MDL-XF/MDL-XD Series Fiber Coupled Laser***



### ***MDL-SD/MDL-XF/MDL-XD Series***

#### ***Fiber Coupled Laser***

The laser is coupled with a line generator at the fiber end. It is made features of high power, perfect line uniformity, continuously adjustable line width. Line generator can be customized on request.

The user can choose from IR, red, green, blue, violet or UV wavelengths.

MDL-SD/MDL-XF/MDL-XD Series Fiber coupled Laser with its stable performance, high reliability works professionally in long distance transmission, road detection, railway detection, tunnel detection, etc.

### ***FEATURES***

- Output power up to 30W
- Wavelengths from 375 to 830nm
- TTL modulation up to 30kHz
- Analog modulation up to 30kHz

### ***APPLICATIONS***

- Long distance transmission
- Road detection
- Railway detection
- Tunnel detection

**SYSTEM SPECIFICATION\***

Model		MDL-SD	MDL-XF	MDL-XD						
Wavelength	nm	375	488	405	450	520	640	655	750	830
Wavelength tolerance	nm (typical)	±5	±5	±5	±5	±10	±5	±10	±10	±20
Output power	W	0.3-1	0.4-1.5	1-10	3.5-30	0.8-10	1-8	1-4.5	5-20	2-10
Power stability (rms, over 4hours)		<1%, <2%, <3%								
Laser operation mode		CW								
Fiber core diameter	µm	400/ 200 (Other core diameters are available on request)								
Fiber NA		0.22								
Fiber connector		SMA905/ FC								
Fiber length	m	1 (Other lengths are available on request)								
Expected lifetime	hours	10,000								

**ELECTRICAL SPECIFICATIONS**

Model		MDL-SD/MDL-XF		MDL-XD	
Power supply		PSU-H-LED	PSU-H-FDA	PSU-N-LED	PSU-N-FDA
Input voltage		100-240V AC		100-240V AC	
Modulation frequency	kHz	TTL modulation up to 30 Analog modulation up to 30			

**ENVIRONMENTAL CONDITIONS**

Operating temperature	°C	10°C to 35°C
Storage temperature	°C	-20 °C to +80 °C
Humidity	%	< 90 %, non-condensing

**LINE GENERATOR**

Line angle		30°, 45°, 60°, 90°
Luminance uniformity		80%
Straightness error		Less than 0.5%
85% peak power proportion in corss-section		95%
Temperature & power stability		Less than 0.5%

**KEYNOTES**

\*All testing data under the conditions of temperature 25°C.

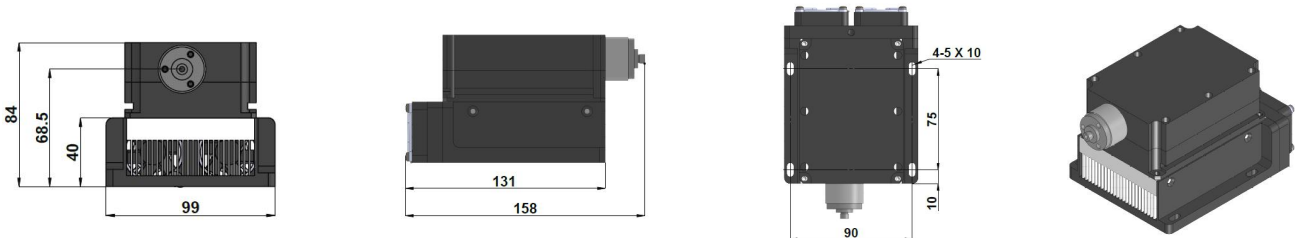


Line generator can be used to display a uniform straight reference line for use in alignment, construction and process control. It can be customized on request. Lenses of line generator are available in fan angles of 30°, 45°, 60° and 90° for custom applications.

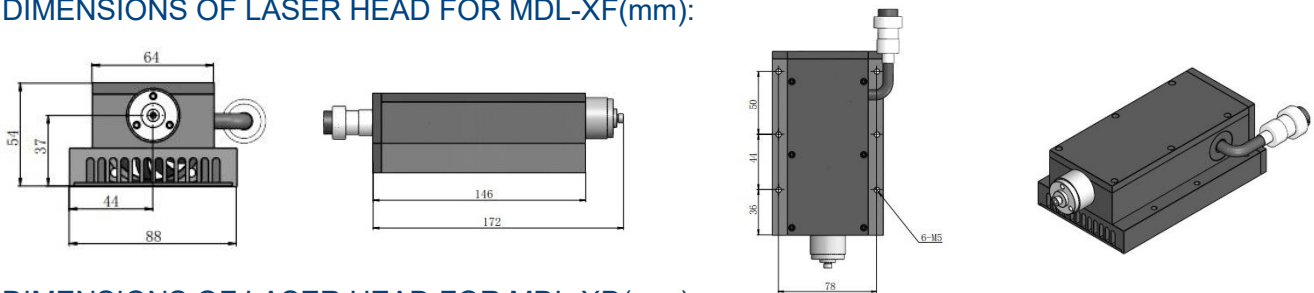
### MECHANICAL SPECIFICATIONS

Model		MDL-SD/ MDL-XF		MDL-XD	
Dimensions of laser head	mm	158 x 99 x 84/ 172 x 88 x 54		328 x 186 x 125	
Dimensions of power supply	mm	PSU-H-LED	PSU-H-FDA	PSU-N- LED	PSU-N-FDA
		277 x 145 x 106	275 x 145 x 104	307 x 150 x 106	307 x 150 x 106
Material		Aluminum			

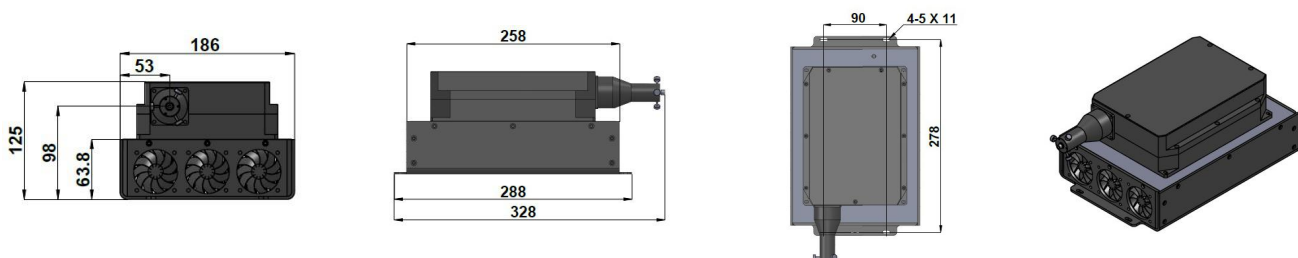
#### DIMENSIONS OF LASER HEAD FOR MDL-SD(mm):



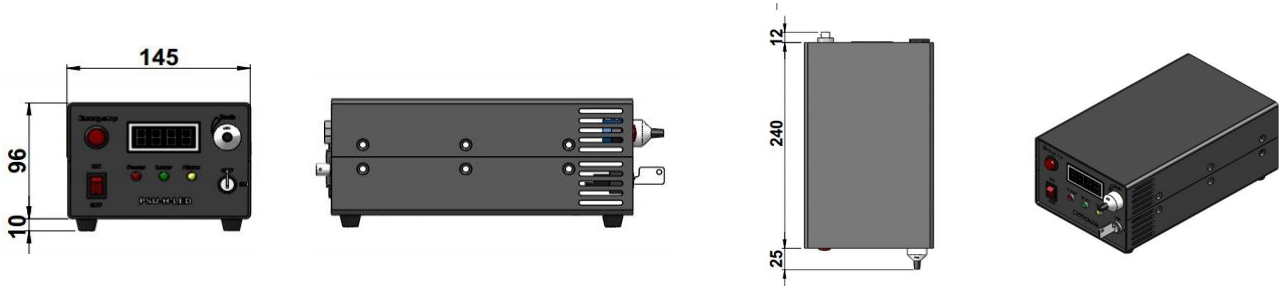
#### DIMENSIONS OF LASER HEAD FOR MDL-XF(mm):



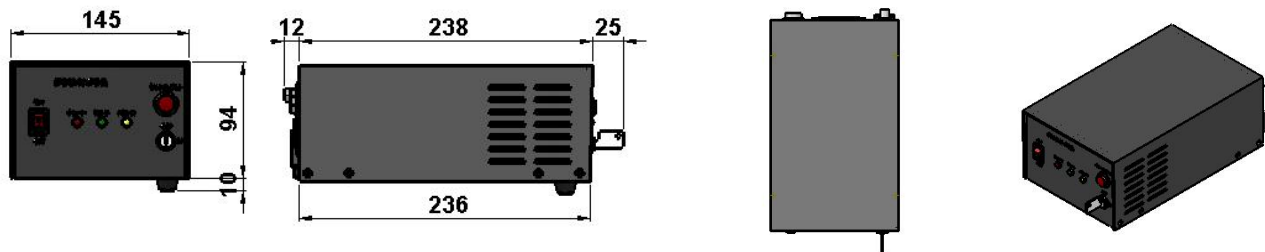
#### DIMENSIONS OF LASER HEAD FOR MDL-XD(mm):



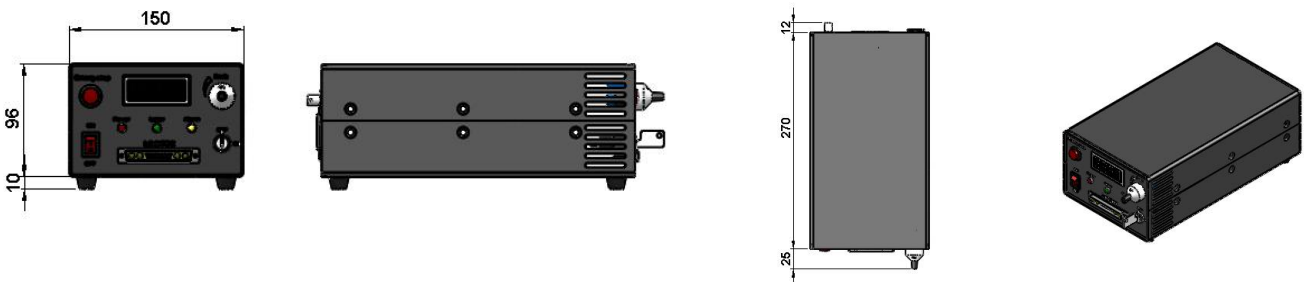
### DIMENSIONS OF POWER SUPPLY FOR PSU-H-LED (mm):



### DIMENSIONS OF POWER SUPPLY FOR PSU-H-FDA (mm):



### DIMENSIONS OF POWER SUPPLY FOR PSU-N-LED (mm):



### DIMENSIONS OF POWER SUPPLY FOR PSU-N-FDA (mm):

