

TUN-F-638-644

RED DIODE LASER AT 638-644NM

Red diode laser at 638-644nm is made features of TEM₀₀ mode, tunable wavelength, easy operation, which is used in holograph, fluorescence sensors, laser displaying, laser lighting show ,and spectrum analysis, etc.

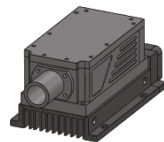


SPECIFICATIONS

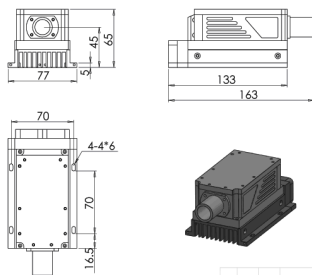
Wavelength (nm)	638-644	
Output power (mW)	>1, 2,3....., 40	
Transverse mode	TEM ₀₀	
Operating mode	CW	
Ellipticity	>0.98	
Beam quality (M ²)	<1.1	
Power stability (rms, over 4 hours)	<1%, <3%, <5%	
Pointing stability after warm-up (mrad)	<0.05	
Polarization ratio	no fixed polarization	>50:1 (>100:1 optional)
Warm-up time (minutes)	<5	
Beam divergence, full angle (mrad)	<1.0	
Beam diameter at the aperture (mm)	~1.0	
Beam height from base plate (mm)	45	
Operating temperature (°C)	10-30	
Power supply (90-264VAC)	PSU-TU-A	
Modulation option	TTL/Analog 1Hz-5KHz, 1Hz-10KHz, 1Hz-30KHz, and TTL on/off	
Expected lifetime (hours)	10000	
Warranty period	1 year	



TUN-F-HS



163(L)×77(W)×65(H) mm³



185 (L) ×177(W) ×105 (H) mm³, 1.5kg

